

COLTEN CARE
LIVING SPACES
LOVING GARDENS

AT COLTEN CARE WE PRIDE OURSELVES ON OUR BEAUTIFUL AND STIMULATING GARDENS.

We recognise that many of our residents had such gardens themselves, and that gardening has been a special past-time for them.

We like to think that we can offer residents the opportunity to continue that past-time in whatever way they feel appropriate. It may just be keeping a watchful eye on it all!

Our gardens serve all our residents, so we fully hope that you will find those different garden spots to enjoy!

Hello there



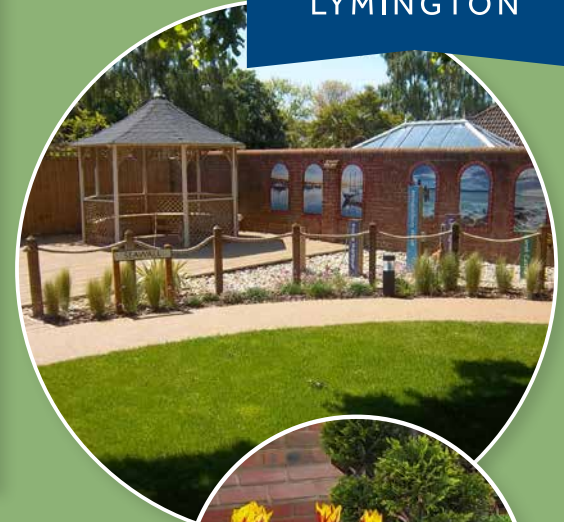
Our gardener Chris has worked at Linden since it opened in 2014. He does all the hard work! –mowing and weeding and watering etc.

However, Chris is very involved in the development of the garden, and is also happy to chat to those residents with a hint or tip to share!

Chris also loves growing fruit and veg – he has a great allotment, and is trying to develop that here. Of course here – the produce is for everyone!

Approachable and friendly – Chris is here two days a week to help keep our gardens beautiful...

LINDEN HOUSE
LYMINGTON

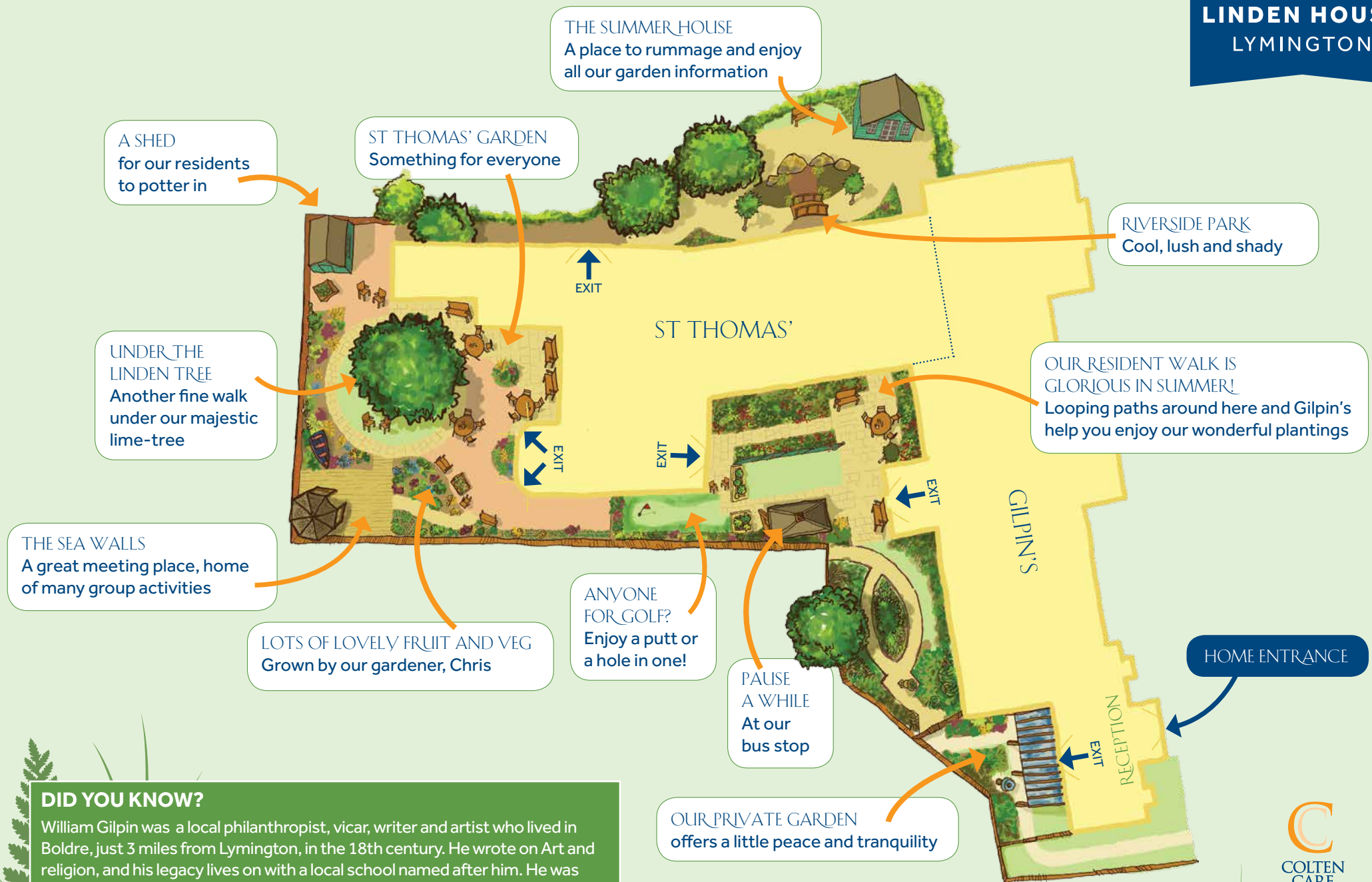


PLANT OF THE MOMENT

Look at the screen at Reception – this will show you a plant that's really doing something special at the moment, and tell you a little bit of information about it...

Take a walk around the garden... the 'Plant of the Moment' sign will show you that plant in our garden!

LINDEN HOUSE
LYMINGTON



DID YOU KNOW?

William Gilpin was a local philanthropist, vicar, writer and artist who lived in Boldre, just 3 miles from Lymington, in the 18th century. He wrote on Art and religion, and his legacy lives on with a local school named after him. He was keen that gardening should be seen as a past-time and profession of the highest order – so part of our garden is named after him!